

St Martins School

Landscape Concept Masterplan (Rev 1)

November 2018



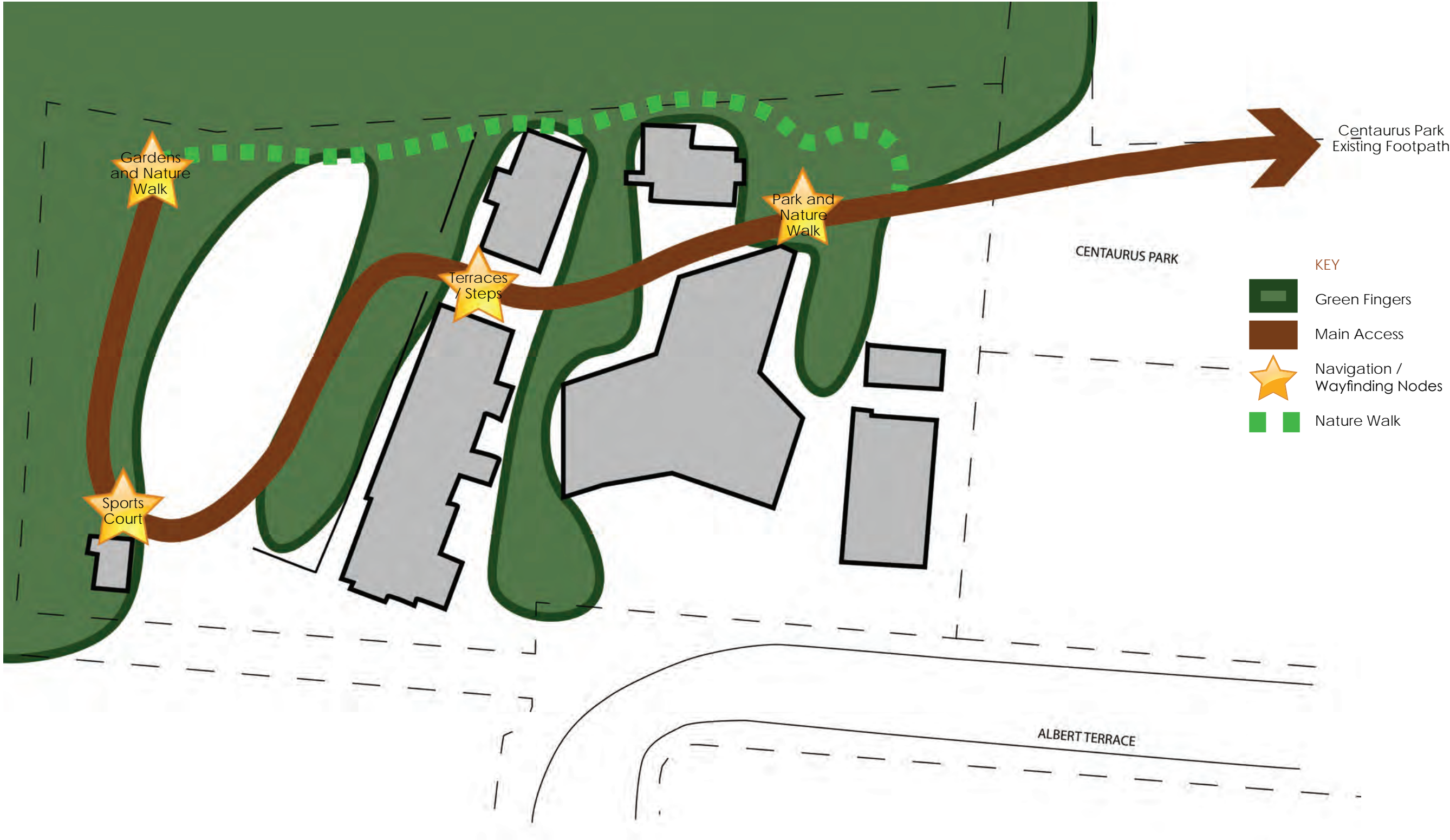
St Martins School

Conceptual Ideas - 'Green Fingers'



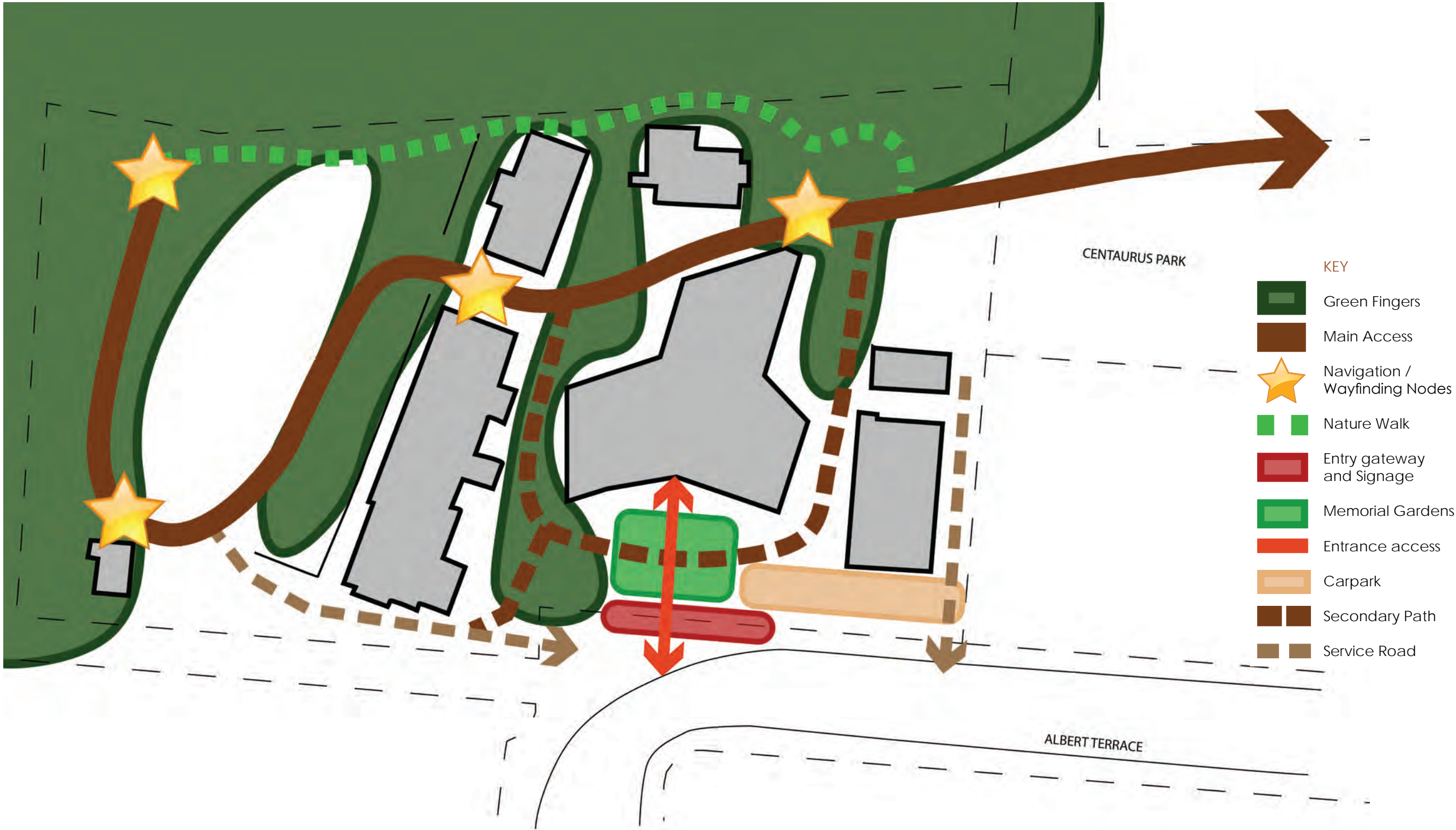
St Martins School

Conceptual Ideas - Main Access, Navigation / Wayfinding, and Nature Walk



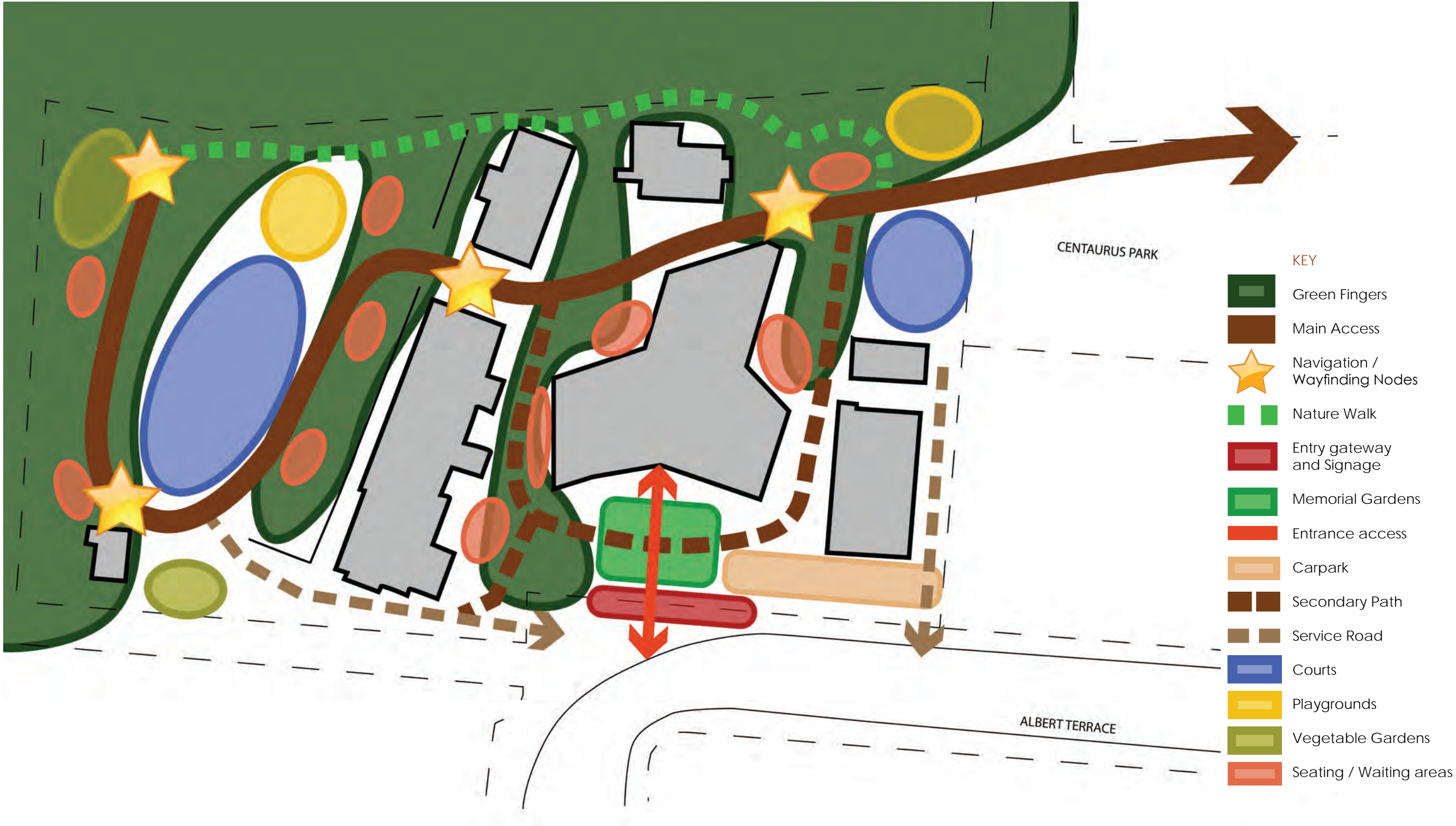
St Martins School

Conceptual Ideas - Main Entrance and Memorial Garden, and Circulation



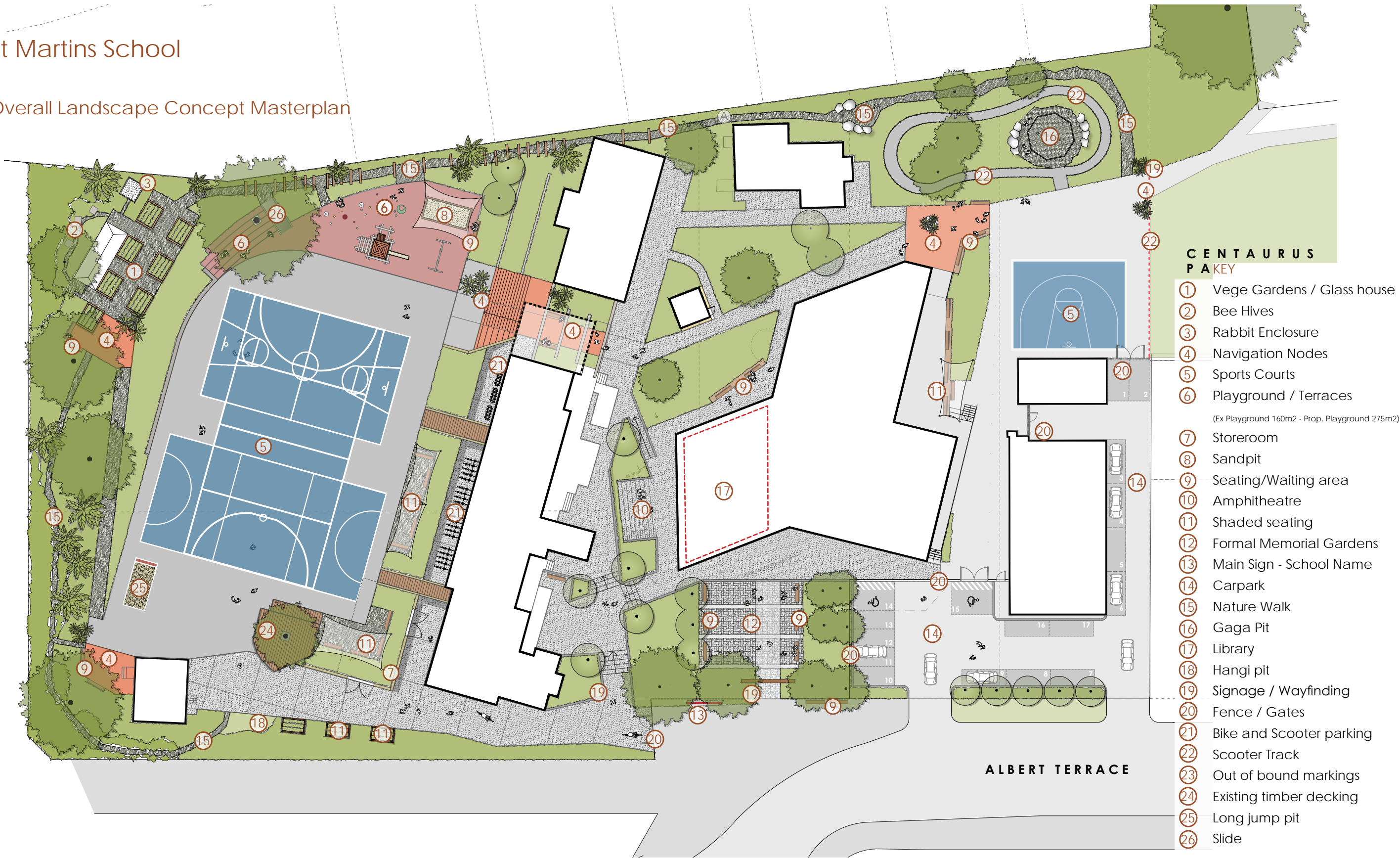
St Martins School

Conceptual Ideas - Sports Courts, Playgrounds, and Vege Gardens



St Martins School

Overall Landscape Concept Masterplan

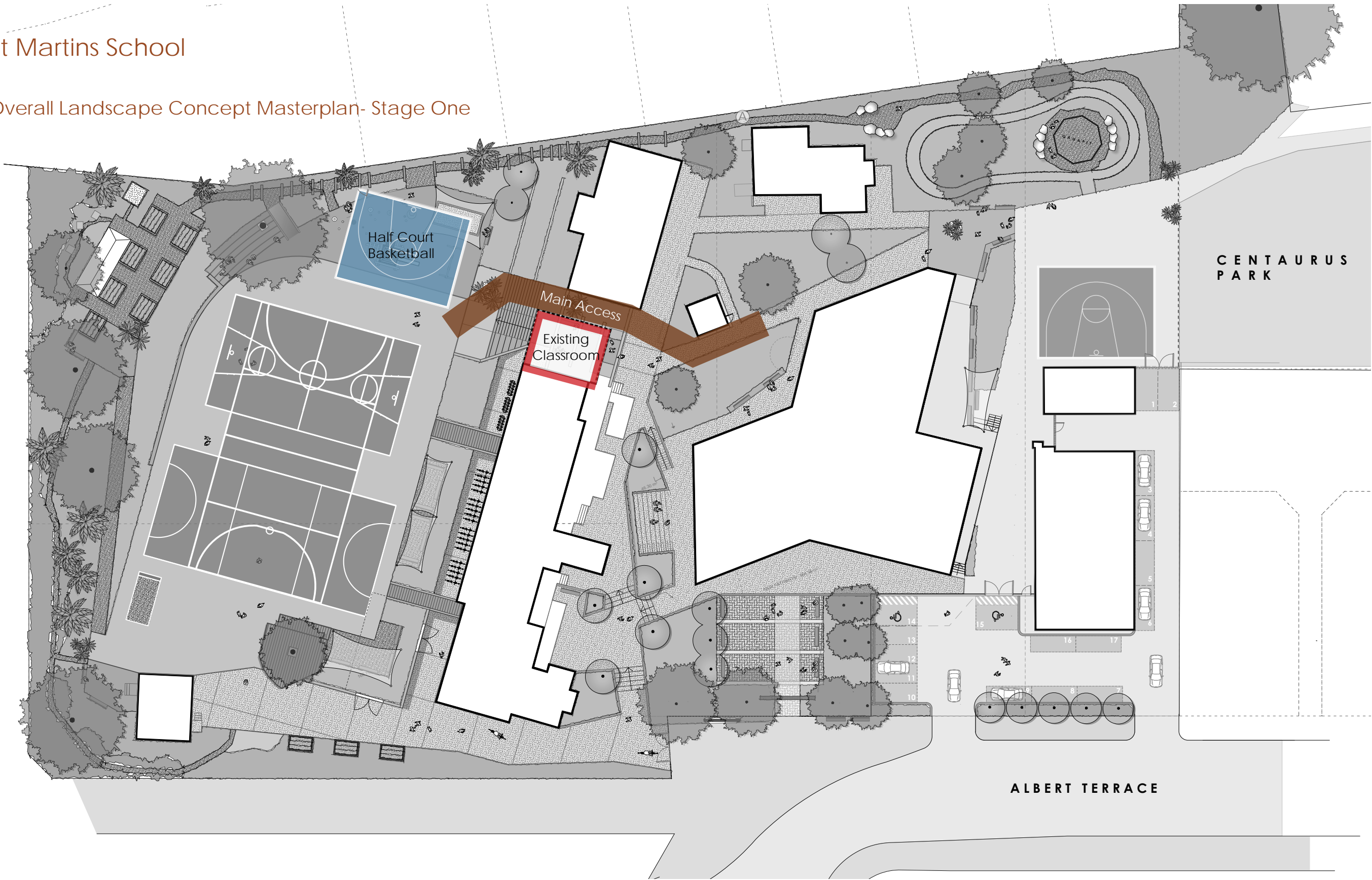


SCALE 1:5000 @ A3



St Martins School

Overall Landscape Concept Masterplan- Stage One

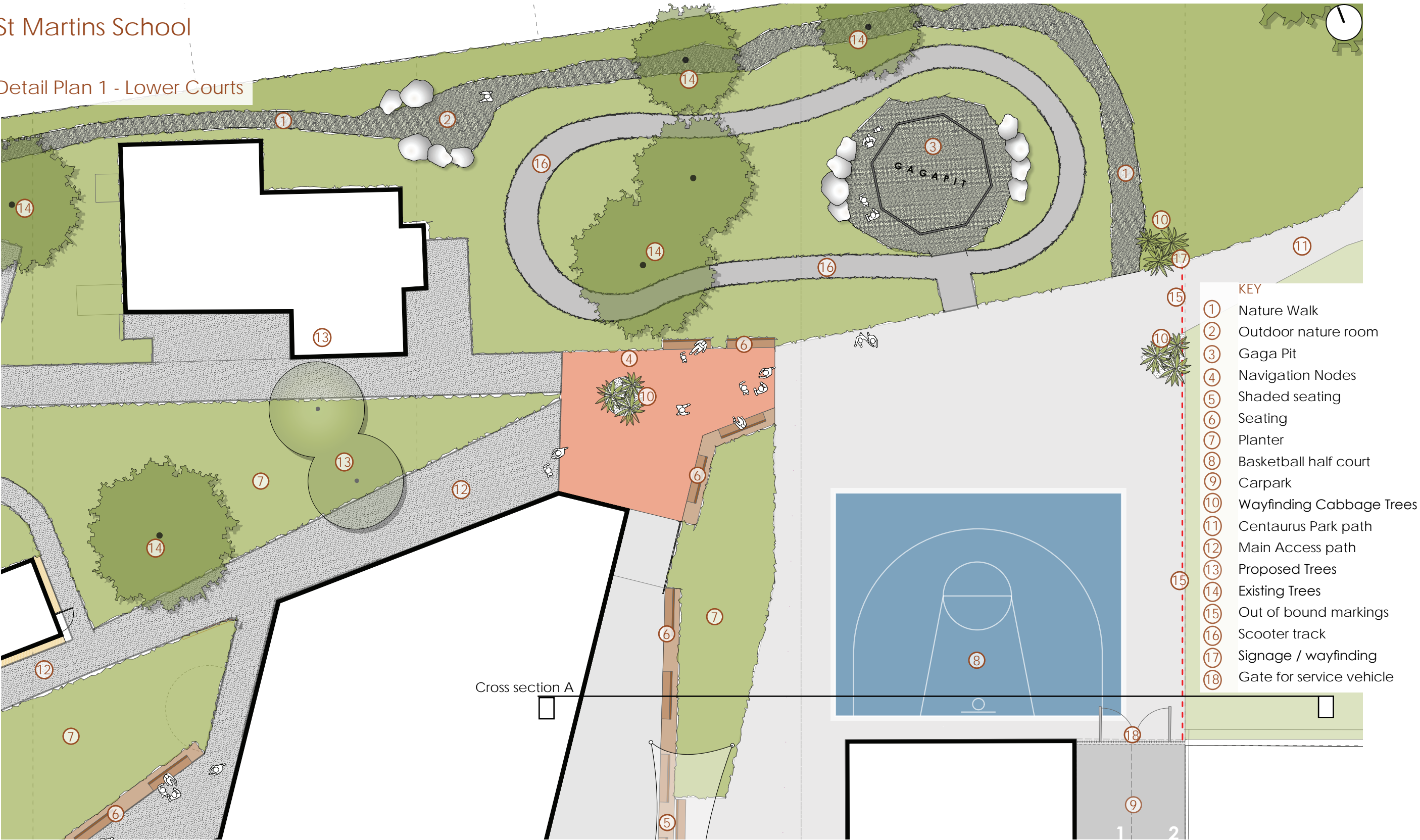


SCALE 1:5000 @ A3



St Martins School

Detail Plan 1 - Lower Courts

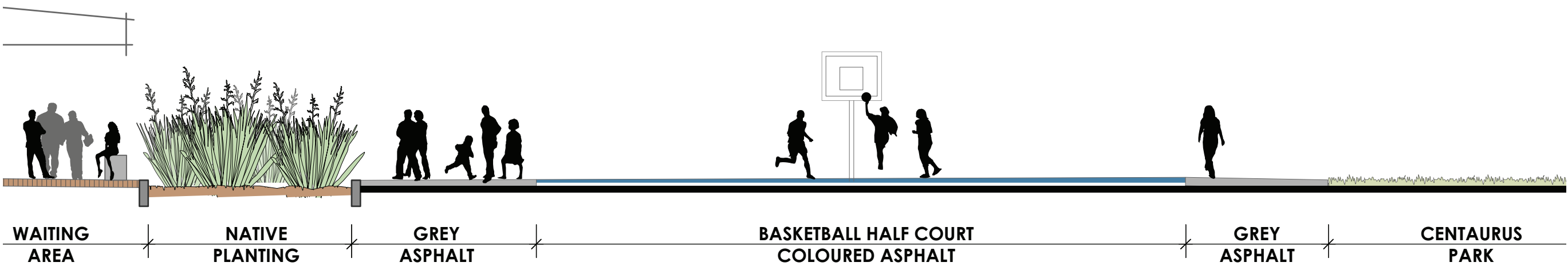


SCALE 1:2000 (approx.) @ A3



St Martins School

Cross Section A - Lower Courts

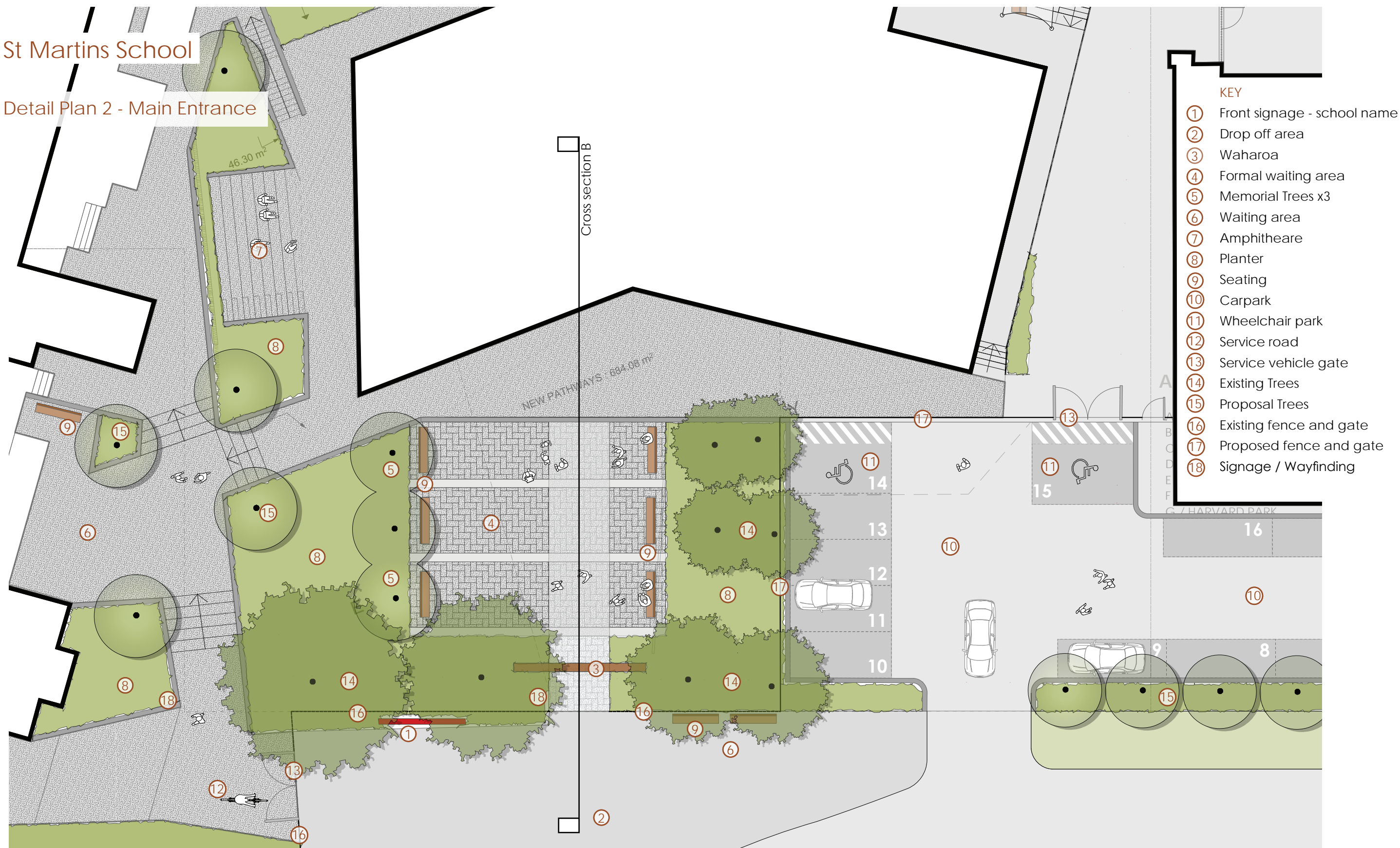


SCALE 1:1000 (approx.) @ A3



St Martins School

Detail Plan 2 - Main Entrance

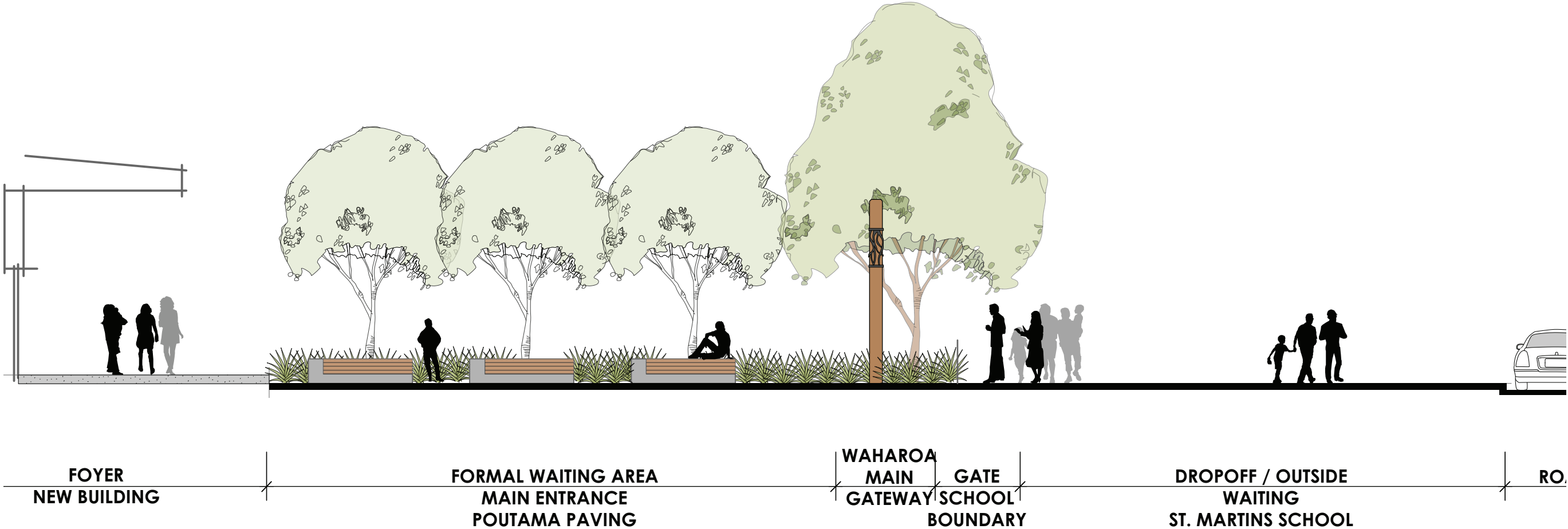


SCALE 1:2000 (approx.) @ A3



St Martins School

Cross Section B - Main Entrance



SCALE 1:1000 (approx.) @ A3



St Martins School

Detail Plan 3- Upper Court Access

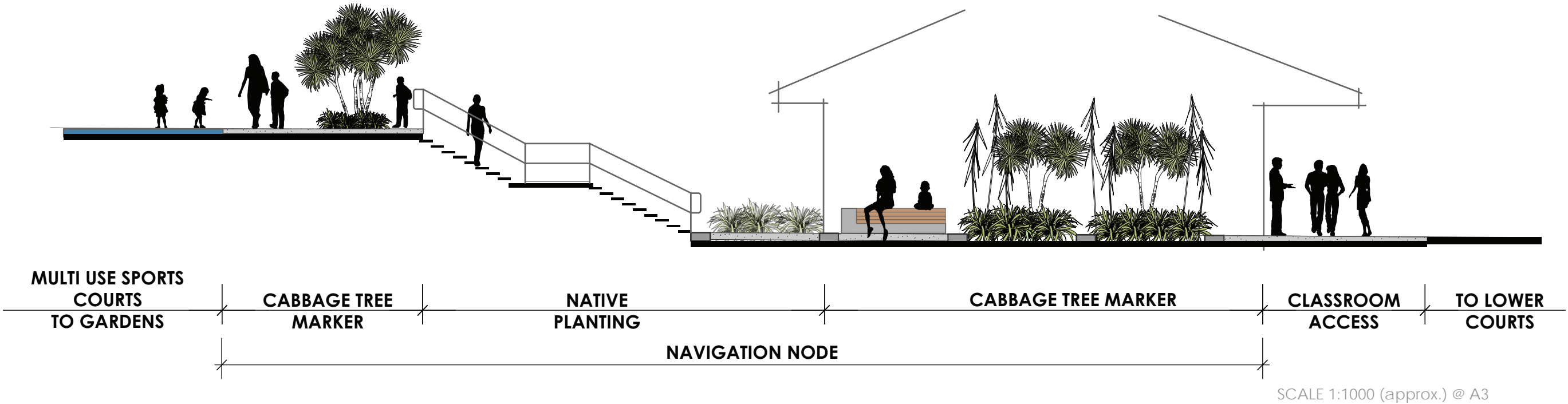


SCALE 1:2000 (approx.) @ A3



St Martins School

Cross Section C - Upper Court Access



St Martins School

Indicative Planting Palette



MEMORIAL TREES - SUGGESTIONS

- 1. Liquidambar styraciflua 'Worplesdon'
- 2. Magnolia grandiflora 'Little Gem'

- 3. Cornus 'Eddies White Wonder'
- 4. Acer Palmatum 'Red Japanese Maple'
- 5. Sophora microphylla

WAYFINDING TREES

- 6. Cordyline australis

ALPINE GRASSES

- 7. Carex testacea
- 8. Pseudopanax crassifolius

FOREST

- 9. Pseudopanax arboreus
- 10. Coprosma 'Karo Red'
- 11. Hebe strictissima (Banks Peninsula koromiko)

FLAX

- 12. Phormium cookianum (various)
- 13. Libertia spp.
- 14. Muehlenbeckia astonii

St Martins School

Precedent Images



SPORTS COURT



POUTAMA PAVING PATTERNS



WAHAROA GATEWAY



NATURE WALK - AGGROK
PAVING



SEATING